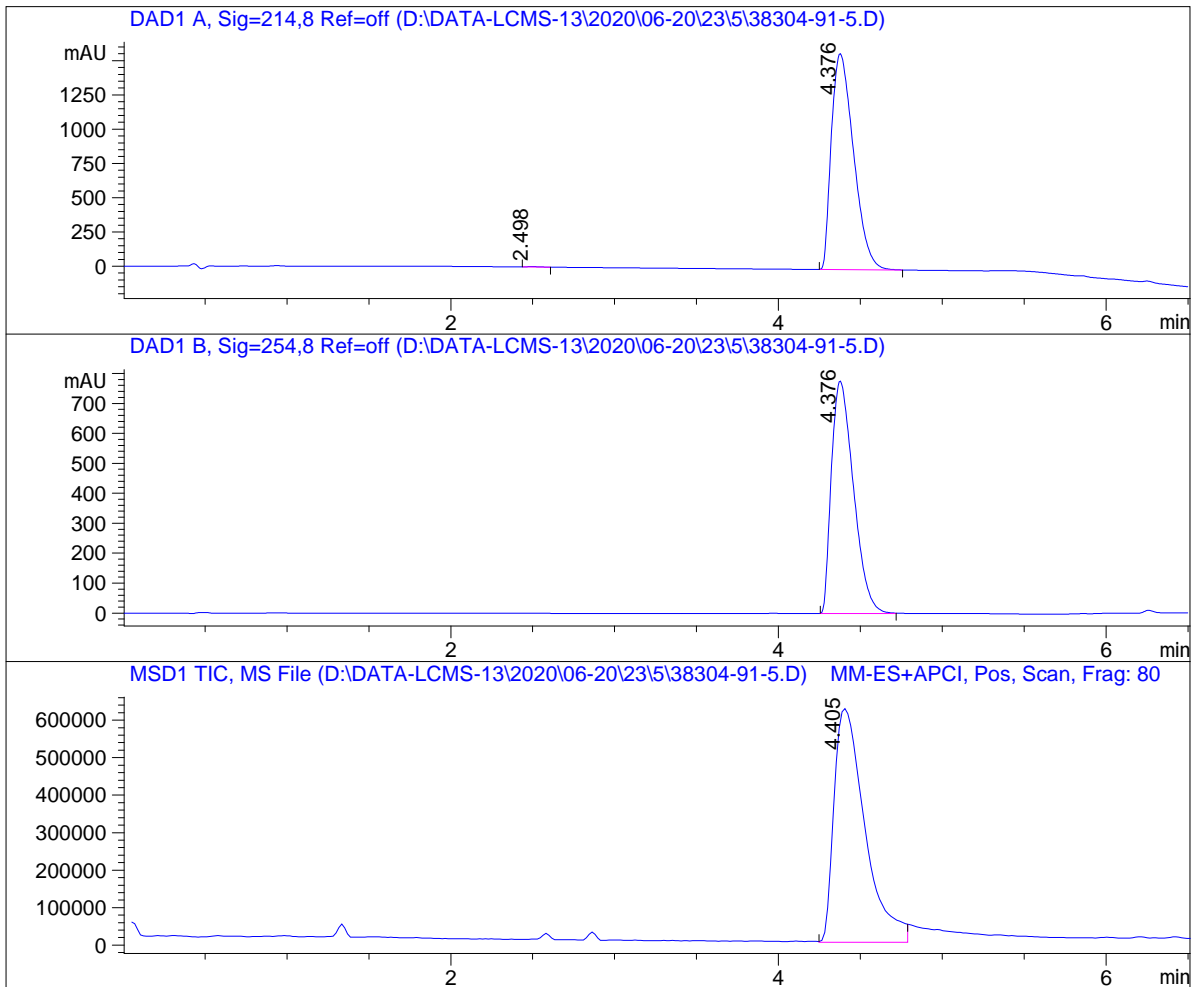


LCMS Report

Sample Name : 38304-91-5
 Data File : D:\DATA-LCMS-13\2020\06-20\23\5\38304-91-5.D
 Injection Date : Tue, 23. Jun. 2020 Inj. Vol. : 1ul
 Acq Operator : LCMS-13 Location : Vial 35
 Acq. Method : D:\data-lcms-13\2020\06-20\23\5\P-02-20-TFA.M
 Method Info. : column:Xbridge C18 5um 4.6*50mm ;mobile phase:B(ACN),
 A(0.05%TFA); gradient(B%):as Acq.Method above



=====
 Integration Results
 =====

Signal 1: DAD1 A, Sig=214,8 Ref=off

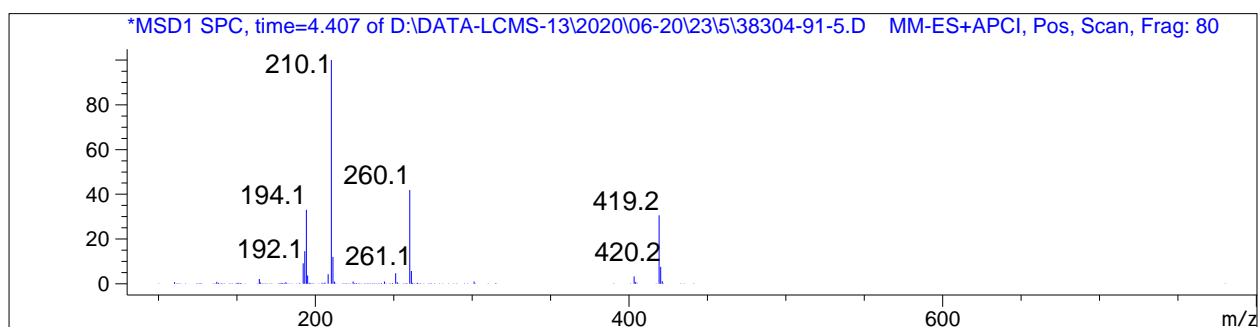
#	R.T.	Type	Height	Height%	Width	Area	Area %
1	2.498	FM	3.512	0.222	0.085	17.974	0.121
2	4.376	BB	1576.485	99.778	0.150	14825.317	99.879

Signal 2: DAD1 B, Sig=254,8 Ref=off

#	R.T.	Type	Height	Height%	Width	Area	Area %
1	4.376	BB	776.029	100.000	0.149	7255.736	100.000

Signal 3: MSD1 TIC, MS File

#	R.T.	Type	Height	Height%	Width	Area	Area %
1	4.405	MM	624669.688	100.000	0.218	8.180e+006	100.000



=====
 *** End of Report ***