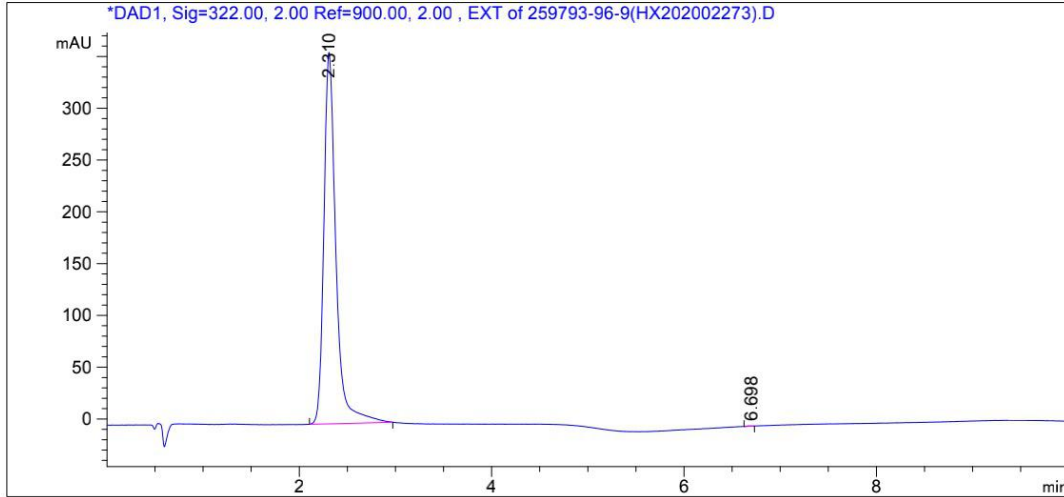




Favipiravir (Cas 259793-96-9) HPLC Spectrum

Additional info : Peak(s) manually integrated

*DAD1, Sig=322.00, 2.00 Ref=900.00, 2.00 , EXT of 259793-96-9(HX202002273).D



=====
Area Percent Report
=====

Sorted By : Signal
Multiplier : 1.0000
Dilution : 1.0000
Use Multiplier & Dilution Factor with ISTDs

Signal 1: DAD1, Sig=322.00, 2.00 Ref=900.00, 2.00 , EXT
Signal has been modified after loading from rawdata file!

Peak #	RetTime [min]	Type	Width [min]	Area [mAU*s]	Height [mAU]	Area %
1	2.310	BB	0.1308	3113.58643	358.51880	99.9583
2	6.698	VV	0.0628	1.29992	2.64600e-1	0.0417

Totals : 3114.88634 358.78340