

Analysis

Samples: *Standard solution* and *Sample solution*

Acceptance criteria

Alpha cyclodextrin: 0.25%; the area of any peak corresponding to alpha cyclodextrin is NMT 0.5 times the area of the corresponding peak from the *Standard solution*.

Gamma cyclodextrin: 0.25%; the area of any peak corresponding to gamma cyclodextrin is NMT 0.5 times the area of the corresponding peak from the *Standard solution*.

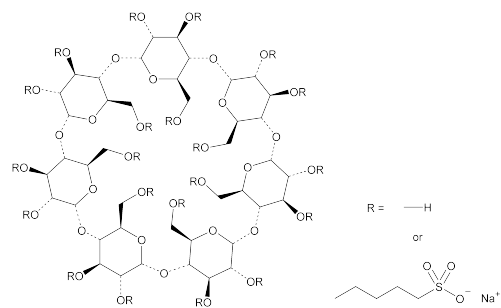
Other related substances: 0.5%; the sum of all of the peak areas, excluding the alpha cyclodextrin, beta cyclodextrin, gamma cyclodextrin, and artifact peaks is NMT the area of the peak due to betadex (beta cyclodextrin) from the *Standard solution*.

SPECIFIC TESTS

- **MICROBIAL ENUMERATION TESTS** (61) and **TESTS FOR SPECIFIED MICROORGANISMS** (62): The total aerobic microbial count does not exceed 10^3 cfu/g, and the total combined molds and yeasts count does not exceed 10^2 cfu/g. It meets the requirements of the tests for absence of *Salmonella* species and *Escherichia coli*.
- **OPTICAL ROTATION, Specific Rotation** (781S)
Sample solution: 10 mg/mL in water
Acceptance criteria: $+160^\circ$ to $+164^\circ$, determined at 20°
- **WATER DETERMINATION, Method I** (921): NMT 14.0%
- **COLOR AND CLARITY OF SOLUTION**
Sample solution: Dissolve 0.2 g in 20.0 mL of freshly boiled and cooled water.
Acceptance criteria: The resulting solution is clear and colorless.
- **pH** (791)
Sample solution: Add 0.1 mL of a saturated solution of potassium chloride to 10 mL of a 10 mg/mL aqueous solution of Betadex.
Acceptance criteria: 5.0–8.0

ADDITIONAL REQUIREMENTS

- **PACKAGING AND STORAGE:** Preserve in tight containers. No storage requirements specified.
- **USP REFERENCE STANDARDS** (11)
 USP Alpha Cyclodextrin RS
 USP Beta Cyclodextrin RS
 USP Gamma Cyclodextrin RS
 USP Dextrose RS

Betadex Sulfobutyl Ether Sodium

$C_{42}H_{70-n}O_{35} \cdot (C_4H_8SO_3Na)_n$ 2163 when $n = 6.5$
 Beta cyclodextrin sulfobutyl ethers, sodium salts;
 Beta cyclodextrin sulfobutyl ether sodium [182410-00-0].

DEFINITION

Betadex Sulfobutyl Ether Sodium is prepared by alkylation of betadex using 1,4-butane sultone under basic conditions.

The average degree of substitution in betadex is NLT 6.2 and NMT 6.9. It contains NLT 95.0% and NMT 105.0% of $C_{42}H_{70-n}O_{35} \cdot (C_4H_8SO_3Na)_n$ ($n = 6.2-6.9$), calculated on the anhydrous basis.

IDENTIFICATION

- **A. INFRARED ABSORPTION** (197K)
- **B.** The retention time of the major peak of the *Sample solution* corresponds to that of the *Standard solution*, as obtained in the *Assay*.
- **C.** It meets the requirements of the test for *Average Degree of Substitution*.
- **D. IDENTIFICATION TESTS—GENERAL, Sodium** (191)

ASSAY

- **PROCEDURE**
Mobile phase: 0.1 M potassium nitrate in a mixture of acetonitrile and water (1:4)
Standard solution: 10 mg/mL of USP Betadex Sulfobutyl Ether Sodium RS in *Mobile phase*
Sample solution: 10 mg/mL of Betadex Sulfobutyl Ether Sodium in *Mobile phase*
Chromatographic system
 (See *Chromatography* (621), *System Suitability*.)
Mode: LC
Detector: Refractive index
Detector temperature: $35 \pm 2^\circ$
Column: 7.8-mm \times 30-cm analytical column; packing L37. [NOTE—Rinse the column with a solution of acetonitrile and water (1:9) at the completion of the run series.]
Flow rate: 1.0 mL/min
Injection size: 20 μ L
System suitability
Sample: *Standard solution*
Suitability requirements
Relative standard deviation: NMT 2.0%
Analysis
Samples: *Standard solution* and *Sample solution*
 Calculate the percentage of betadex sulfobutyl ether sodium [$C_{42}H_{70-n}O_{35} \cdot (C_4H_8SO_3Na)_n$] in the portion of Betadex Sulfobutyl Ether Sodium taken:

$$\text{Result} = (r_U/r_S) \times (C_S/C_U) \times 100$$

- r_U = peak response for betadex sulfobutyl ether sodium from the *Sample solution*
 r_S = peak response for betadex sulfobutyl ether sodium from the *Standard solution*
 C_S = concentration of USP Betadex Sulfobutyl Ether Sodium RS in the *Standard solution* (mg/mL)
 C_U = concentration of Betadex Sulfobutyl Ether Sodium in the *Sample solution* (mg/mL)

Acceptance criteria: 95.0%–105.0% on the anhydrous basis

IMPURITIES**Delete the following:**

- **HEAVY METALS, Method II** (231): NMT 5 ppm (Official 1-Jan-2018)
- **LIMIT OF BETA CYCLODEXTRIN (BETADEX)**
Solution A: 25 mM sodium hydroxide
Solution B: 250 mM sodium hydroxide and 1 M potassium nitrate
Mobile phase: See *Table 1*.

Table 1

Time (min)	Solution A (%)	Solution B (%)
0	100	0
4	100	0

Table 1 (Continued)

Time (min)	Solution A (%)	Solution B (%)
5	0	100
10	0	100
11	100	0
20	100	0

Standard solution: 2 µg/mL of USP Beta Cyclodextrin RS

Sample solution: 2 mg/mL of Betadex Sulfobutyl Ether Sodium

Chromatographic system

(See *Chromatography* <621>, *System Suitability* and *Ion Chromatography* <1065>.)

Mode: IC

Detector: Pulsed amperometry (amperometric cell with gold working electrode and silver reference electrode)

Column

Guard: 4.0-mm × 5-cm anion-exchange; packing L61

Analytical: 4.0-mm × 25-cm anion-exchange; packing L61

Column temperature: 50 ± 2°

Flow rate: 1.0 mL/min

Injection size: 20 µL

Waveform for pulsed amperometric detector: See *Table 2*.

Table 2

Time (s)	Voltage (V)
0.00	0.10
0.30	Start integration
0.50	0.10
0.50	Stop integration
0.51	0.60
0.59	0.60
0.60	-0.60
0.65	-0.60

System suitability

Sample: *Standard solution*

Suitability requirements

Relative standard deviation: NMT 5.0%

Analysis

Samples: *Standard solution* and *Sample solution*

Calculate the percentage of beta cyclodextrin (betadex) in the portion of Betadex Sulfobutyl Ether Sodium taken:

$$\text{Result} = (r_U/r_S) \times (C_S/C_U) \times F \times 100$$

r_U = peak response for beta cyclodextrin from the *Sample solution*

r_S = peak response for beta cyclodextrin from the *Standard solution*

C_S = concentration of USP Beta Cyclodextrin RS in the *Standard solution* (µg/mL)

C_U = concentration of Betadex Sulfobutyl Ether Sodium in the *Sample solution* (mg/mL)

F = conversion factor (10⁻³ mg/µg)

Acceptance criteria: NMT 0.1%

• **LIMIT OF 1,4-BUTANE SULTONE**

Internal standard solution: 0.25 µg/mL of diethyl sulfone

Standard stock solution A: 0.5 µg/mL of 1,4-butane sultone

Standard stock solution B: 1.0 µg/mL of 1,4-butane sultone

Standard stock solution C: 2.0 µg/mL of 1,4-butane sultone

Sample stock solution: 250 mg/mL of Betadex

Sulfobutyl Ether Sodium in the *Internal standard solution*

Blank solution, and Sample solutions A, B, C, and D:

Follow *Table 3* to place the quantities of *Internal standard solution*, each *Standard stock solution*, *Sample stock solution*, water, or methylene chloride in each glass test tube with a stopper. [NOTE—A screw-capped, 10-mL test tube is suitable.] Mix on a vortex mixer each test tube for 30 s, and allow it stand for at least 5 min or until complete separation of the phase. Extract the organic phase into a GC vial and seal. [NOTE—With great care take the minimum possible amount of aqueous phase.] Added quantities of 1,4-butane sultone in *Sample solutions A, B, C, and D* are 0.5, 1.0, 2.0, and 0 µg, respectively.

Table 3

Sample Name	Solution 1 Added (mL)	Solution 2 Added (mL)	Methylene Chloride Added (mL)
Blank solution	Internal standard solution, 4.0	Water, 1.0	1.0
Sample solution A	Sample stock solution, 4.0	Standard stock solution A, 1.0	1.0
Sample solution B	Sample stock solution, 4.0	Standard stock solution B, 1.0	1.0
Sample solution C	Sample stock solution, 4.0	Standard stock solution C, 1.0	1.0
Sample solution D	Sample stock solution, 4.0	Water, 1.0	1.0

[NOTE—Prepare immediately before use.]

Chromatographic system

(See *Chromatography* <621>, *System Suitability*.)

Mode: GC

Detector: Flame ionization

Column: 0.32-mm × 25-m fused-silica capillary column; 0.5-µm layer of phase G46

Temperature

Detector: 270°

Injection port: 200°

Column: See the temperature program in *Table 4*.

Table 4

Initial Temperature (°)	Temperature Ramp (°/min)	Final Temperature (°)	Hold Time at Final Temperature (min)
100	10	200	—
200	35	270	5

Carrier gas: Helium, typically at 12 psi inlet pressure

Injection size: 1.0 µL

Injection type: Splitless injection for 0.5 min, then split at 50 mL/min. [NOTE—The use of an appropriate splitless injection liner is recommended.]

System suitability

Sample: *Sample solution B*

[NOTE—The relative retention times for diethyl sulfone and 1,4-butane sultone are 0.7 and 1.0, respectively.]

Suitability requirements**Relative standard deviation:** NMT 10.0%**Analysis****Samples:** Blank solution, Sample solutions A, B, C, and D

Correct the ratio of peak responses of the 1,4-butane sultone to diethyl sulfone in *Sample solution A, B, C, or D* by subtracting the ratio of peak responses of the 1,4-butane sultone to ethyl sulfone in the *Blank solution*. Plot the corrected ratio of peak response of 1,4-butane sultone to peak response of diethyl sulfone in *Sample solution A, B, C or D*, versus the added quantity, in μg , of 1,4-butane sultone. Extrapolate the line joining the points on the graph until it meets the quantity axis. The distance between this point and the intersection of the axes represents the quantity of 1,4-butane sultone, *A*, in μg , in the 4-mL portion of *Sample stock solution*. Calculate the content of 1,4-butane sultone in the portion of Betadex Sulfobutyl Ether Sodium taken:

$$\text{Result} = A / (V_{\text{Ext}} \times C_U \times F)$$

A = determined above*V*_{Ext} = volume of the *Sample stock solution* used in the extraction step, 4.0 mL*C*_U = concentration of Betadex Sulfobutyl Ether Sodium in the *Sample stock solution* (mg/mL)*F* = conversion factor (10^{-3} g/mg)**Acceptance criteria:** NMT 0.5 ppm

• **LIMIT OF SODIUM CHLORIDE, 4-HYDROXYBUTANE-1-SULFONIC ACID, AND BIS(4-SULFOBUTYL) ETHER DISODIUM**

Solution A: 5 mM sodium hydroxide, degas in a closed vessel for 15 min**Solution B:** 25 mM sodium hydroxide, degas in a closed vessel for 15 min**Mobile phase:** See *Table 5*.**Table 5**

Time (min)	Solution A (%)	Solution B (%)
0	100	0
4	100	0
10	70	30
24	70	30
25	100	0
40	100	0

Column wash solution A: 50 mM sodium citrate**Column wash solution B:** 150 mM sodium hydroxide**Standard solution:** Prepare a solution having known concentrations of 8 $\mu\text{g}/\text{mL}$ of USP Sodium Chloride RS, 4 $\mu\text{g}/\text{mL}$ of 4-hydroxybutane-1-sulfonic acid, and 4 $\mu\text{g}/\text{mL}$ of bis(4-sulfobutyl) ether disodium.**Sample solution:** 4 mg/mL of Betadex Sulfobutyl Ether Sodium**Chromatographic system**(See *Chromatography* <621>, *System Suitability* and *Ion Chromatography* <1065>.)**Mode:** IC**Detector:** Conductivity**Range:** 30 μS **Current:** 100 mA**Column:** [NOTE—At the end of each run, clean the column using *Column wash solution A* at a flow rate of 1 mL/min for 35 min then using *Column wash solution B* at the same flow rate for 35 min.]**Guard:** 4.0-mm \times 5.0-cm anion-exchange; packing L61**Analytical:** 4.0-mm \times 25-cm anion-exchange; packing L61**Column temperature:** 30°**Suppressor:** Micromembrane anion autosuppressor¹ or a suitable chemical suppression system**Suppressant:** Autosuppression**Flow rate:** 1.0 mL/min**Injection size:** 20 μL **System suitability****Sample:** *Standard solution*

[NOTE—Relative retention times are provided for information only. The relative retention times for 4-hydroxybutane-1-sulfonate ion, chloride ion, and bis(sulfobutyl) ether ion are 1.0, 1.4, and 8.6, respectively.]

Suitability requirements**Resolution:** NLT 2.0**Relative standard deviation:** NMT 10.0%**Analysis****Samples:** *Standard solution* and *Sample solution*

Calculate the percentage of sodium chloride, 4-hydroxybutane-1-sulfonic acid, or bis(sulfobutyl) ether disodium in the portion of Betadex Sulfobutyl Ether Sodium taken:

$$\text{Result} = (r_U/r_S) \times (C_S/C_U) \times F \times 100$$

*r*_U = peak response for sodium chloride, 4-hydroxybutane-1-sulfonic acid, or bis(sulfobutyl) ether disodium from the *Sample solution**r*_S = peak response for sodium chloride, 4-hydroxybutane-1-sulfonic acid, or bis(sulfobutyl) ether disodium from the *Standard solution**C*_S = concentration of sodium chloride, 4-hydroxybutane-1-sulfonic acid, or bis(sulfobutyl) ether disodium in the *Standard solution* ($\mu\text{g}/\text{mL}$)*C*_U = concentration of Betadex Sulfobutyl Ether Sodium in the *Sample solution* (mg/mL)*F* = conversion factor (10^{-3} mg/ μg)**Acceptance criteria****Sodium chloride:** NMT 0.2%**4-Hydroxybutane-1-sulfonic acid:** NMT 0.09%**Bis(sulfobutyl) ether disodium:** NMT 0.05%**SPECIFIC TESTS**

• **BACTERIAL ENDOTOXINS TEST (85):** The level of bacterial endotoxins is such that the requirement under the relevant dosage form monograph(s) in which Betadex Sulfobutyl Ether Sodium is used can be met. Where the label states that Betadex Sulfobutyl Ether Sodium must be subjected to further processing during the preparation of injectable dosage forms, the level of bacterial endotoxins is such that the requirement under the relevant dosage form monograph(s) in which Betadex Sulfobutyl Ether Sodium is used can be met.

• **MICROBIAL ENUMERATION TESTS (61) and TESTS FOR SPECIFIED MICROORGANISMS (62):** The total aerobic microbial count does not exceed 100 cfu/g, and the total combined molds and yeasts count does not exceed 50 cfu/g. It meets the requirements of the test for absence of *Escherichia coli*.

• **CLARITY OF SOLUTION****Sample solution:** 30% (w/v) solution**Analysis:** Examine the *Sample solution* using a light box against white and black backgrounds, and record the presence of any haze, fluorescence, fibers, specks, or other foreign matter.**Acceptance criteria:** The solution is clear, and essentially free from particles of foreign matter.• **AVERAGE DEGREE OF SUBSTITUTION****Run electrolyte:** 30 mM benzoic acid and adjusted to a pH that is suitable for the instrument used by addition¹ Available as Anion Self-Regenerating Suppressor (ASRS) from Dionex Inc., or equivalent.

of 100 mM tris(hydroxymethyl) aminomethane buffer. [NOTE—Due to variation between capillaries, a single universally applicable electrolyte pH is not specified. Instead, the optimal pH associated with each individual capillary should be determined according to the instrumental manual.]

Standard solution: 10 mg/mL of USP Betadex Sulfobutyl Ether Sodium RS

Sample solution: 10 mg/mL of Betadex Sulfobutyl Ether Sodium

Capillary rinsing procedure: Use separate run electrolyte vials for capillary rinse and sample analysis. Perform pre-analysis rinses on a daily basis before each analysis: rinse the capillary with 0.1 N sodium hydroxide for 30 min, with water for NLT 2 h, and with *Run electrolyte* for NLT 1 h. Perform pre-injection rinses prior to each injection as follows. Rinse the capillary with 0.1 N sodium hydroxide for NLT 1 min, and with *Run electrolyte* for NLT 3 min. If a new capillary is being used, in addition to the regular rinses described above, a new capillary requires rinsing before its first use. Rinse the new capillary with 1 M sodium hydroxide for 1 h, followed by a 2-h water rinse.

Electrophoretic system

(See *Capillary Electrophoresis* (1053).)

Mode: High-performance CE

Detector: Inverse UV 200 nm, with a bandwidth of 20 nm. [NOTE—A detection wavelength of 205 nm with a bandwidth of 10 nm may be used as an alternative.]

Column: 50- μ m \times 50-cm fused silica column

Column temperature: 25 $^{\circ}$

Applied voltage: 0.00 to +30.00 kV linear ramp over 10 min, then at 30 kV for a further 20 min

Injection size: Equal volumes at 0.5 psi for 10 s

System suitability

Sample: *Standard solution*

[NOTE—See *Table 6* for the approximate relative migration times for betadex sulfobutyl ether sodium peaks I–X (betadex sulfobutyl ether sodium peaks I, II, III, ..., X, contains beta cyclodextrin molecule with 1, 2, 3, ..., 10 sulfobutyl substituent(s), respectively). The relative migration times are for informational purposes only to aid in peak identification.]

Table 6

Betadex Sulfobutyl Ether Sodium Peaks I–X	Relative Migration Time
I	0.58
II	0.63
III	0.69
IV	0.77
V	0.83
VI	0.91
VII	1.00
VIII	1.10
IX	1.20
X	1.30

Suitability requirements

Resolution: NLT 0.9, between betadex sulfobutyl ether sodium peak IX and betadex sulfobutyl ether sodium peak X

Analysis

Samples: *Run electrolyte*, water, *Standard solution*, and *Sample solution*

Inject the *Standard solution* and *Sample solution* by applying differential pressure of 0.5 psi, equivalent to 34 mbar, for 10 s, followed by injection of *Run electrolyte* at 0.5 psi for 2 s. [NOTE—Pressure injections should be made with a vial of water or *Run electrolyte* at the outlet end of the capillary.]

Record the electropherograms, and measure the peak responses for the individual betadex sulfobutyl ether sodium peaks (I to X). Calculate the corrected peak area, A_i , for each peak in the electropherogram:

$$\text{Corrected Peak Area } A_i = \frac{\text{Peak Area} \times \text{Effective Capillary Length (cm)}}{\text{Migration Time}}$$

Normalize the corrected peak areas by presenting each as a percentage of the total corrected substitution envelope area:

$$\text{Normalized Area, } NA_i = \frac{A_i}{\sum_{i=1}^n A_i} \times 100$$

n = highest level of substitution

Determine the average degree of substitution:

$$\text{Average Degree of Substitution} = \frac{\sum_{i=1}^n (\text{Level of Substitution for Peak } \times NA_i)}{100}$$

Acceptance criteria: 6.2–6.9 for average degree of substitution

For each of betadex sulfobutyl ether sodium peaks I–X, see limit range (% peak area) in *Table 7*.

Table 7

Betadex Sulfobutyl Ether Sodium Peaks I–X	Limit Range (% Peak Area)
I	0–0.3
II	0–0.9
III	0.5–5.0
IV	2.0–10.0
V	10.0–20.0
VI	15.0–25.0
VII	20.0–30.0
VIII	10.0–25.0
IX	2.0–12.0
X	0–4.0

- **pH** (791): 4.0–6.8, in a 30% (w/v) solution in carbon dioxide-free water
- **WATER DETERMINATION, Method I** (921): NMT 10.0%

ADDITIONAL REQUIREMENTS

- **PACKAGING AND STORAGE:** Preserve in well-closed containers, and store at room temperature. Protect from moisture.
- **LABELING:** Label it to indicate its use in the manufacture of injectable dosage forms.
- **USP REFERENCE STANDARDS** (11)
 - USP Beta Cyclodextrin RS
 - USP Betadex Sulfobutyl Ether Sodium RS
 - USP Endotoxin RS
 - USP Sodium Chloride RS

Boric Acid

H₃BO₃ 61.83
 Boric acid (H₃BO₃) [10043-35-3].

DEFINITION

Boric acid contains NLT 99.5% and NMT 100.5% of boric acid (H₃BO₃), calculated on the dried basis.

IDENTIFICATION

- **A. IDENTIFICATION TESTS—GENERAL, Borate** (191): Meets the requirements